

# ERYTHROCYTE SEDIMENTATION RATE (ESR)

By

Prof. Mahmoud Rushdi  
Faculty of Veterinary Medicine  
Assiut University  
Egypt

1

[www.scholaridea.com](http://www.scholaridea.com)

## Erythrocytes sedimentation rate (ESR)

It is defined as the rate of sedimentation of erythrocytes in a column of anti-coagulated blood at certain time.

A whole blood sample is allowed to stand for a certain time in a perpendicular tube, The erythrocytes are settling down, leaving a clear layer of plasma at the top of the tube. The length of the plasma layer in mm represents a measure of the ESR and expressed as mm/time.

2

[www.scholaridea.com](http://www.scholaridea.com)

**Theories of sedimentation:**

- **Rouleaux formation theory:**  
The red cells of healthy horses has a natural tendency to form chain like arrangement and thus results in rapid settling of red cells.
- **Electrical theory.**
- **Plasma protein theory.**

3

[www.scholaridea.com](http://www.scholaridea.com)**Methods of estimations:**

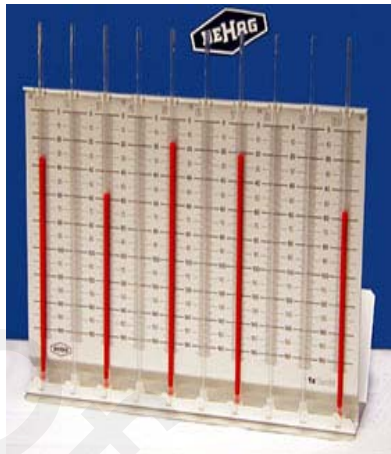
- Wintrobe method.
- Westergreen method.

**Anticoagulant**

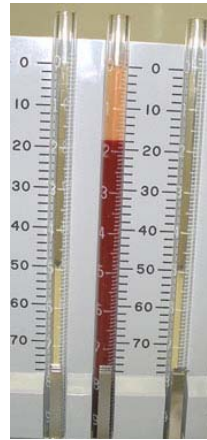
The type of the anticoagulant used for ESR is different according to the method used. EDTA is used for ESR determined by wintrobe method. However, Sodium Citrate (3.8%) is used for ESR that determined using the westergreen method, sodium citrate is used in the ratio of 1:4.

4

[www.scholaridea.com](http://www.scholaridea.com)



**Westergreen method**



**Wintrobe method**

[www.scholaridea.com](http://www.scholaridea.com)

Erythrocytes sedimentation rate

### **Suitable time for ESR:**

**Equine:** 10 minutes and 20 minutes

**Cattle:** after 24 hrs

**Dogs:** 1 hour and 2 hour

**Sheep:** 7hrs and 24hrs

**Buffaloes:** 1 hour

6

[www.scholaridea.com](http://www.scholaridea.com)

Erythrocytes sedimentation rate

**Factors influence the ESR:**

1. **Physical factors:** Temperature, change in size of RBCs and Rouleux formation
2. **Chemical factors:** Anticoagulant.
3. **Physiological factors:** Sex, age, pregnancy, exercise altitude and digestion.
4. **Technical factors:** Position of the tube (Sedimentation is rapid in an inclined position)

7

[www.scholaridea.com](http://www.scholaridea.com)

Erythrocytes sedimentation rate

**5. Pathological factors****Accelerated ESR observed in cases of:**

1. All acute generalized infection.
2. Acute localized inflammatory process of serous membranes such as pleura, pericardium and peritoneum.
3. Chronic localized infection.
4. Toxemia.
5. Severe anemia.
6. Malignant neoplasia.
7. At the beginning of abscess formation.
8. Inflammation of draining cavities such as uterus and head sinuses.

[www.scholaridea.com](http://www.scholaridea.com)

Erythrocytes sedimentation rate

### **Retarded ESR in cases of:**

- 1- Hemoconcentration following dehydration.**
- 2- Chronic obstructive pulmonary disease.**
- 3- Pulmonary diseases that associated with hypoxia.**
- 4- Congestive heart failure.**
- 5- Polycythemia.**

[www.scholaridea.com](http://www.scholaridea.com)

### **DIPHASIC SEDIMENTATION**

Occasionally in ESR determination there is no definite line between the settled erythrocytes and the plasma. Reticulocytes and immature erythrocytes exhibit less tendency to form clumps or chains (rouleaux) than mature erythrocytes; thus ESR is retarded or exhibits a diphasic pattern.

10

[www.scholaridea.com](http://www.scholaridea.com)

## DIPHASIC SEDIMENTATION

This phenomenon occurs as a result for the presence of reticulocytes or other young form of erythrocytes which having abnormal shape. This trailing out of erythrocytes occurs because these cells are larger and don't actively participate in rouleux formation.

11

[www.scholaridea.com](http://www.scholaridea.com)

Handouts of the Lecture is  
available on  
**[www.scholaridea.com](http://www.scholaridea.com)**  
website

The Video of the Lecture is  
Available on  
**Scholar Idea**  
Channel on **YouTube**