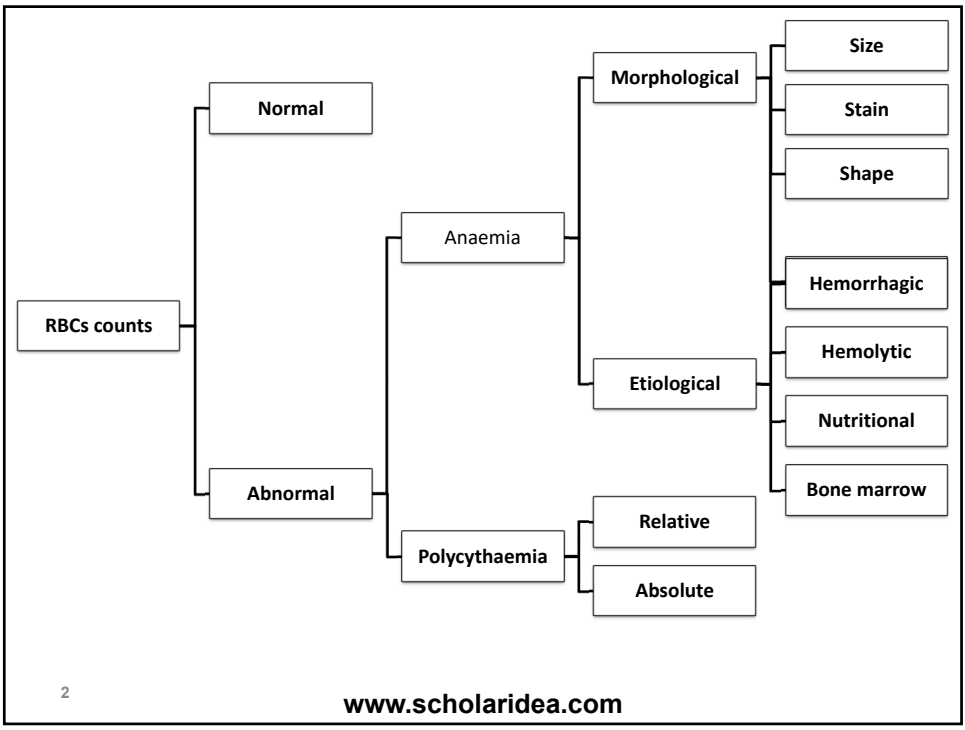


Interpretation of RBCs Count (Anemia)

By

Prof. Mahmoud Rushdi
Assiut University
Egypt



Anemia

Anaemia is a reduction below normal in the number of erythrocytes or hemoglobin concentration or both in the circulating blood per unit volume of blood.

3

www.scholaridea.com

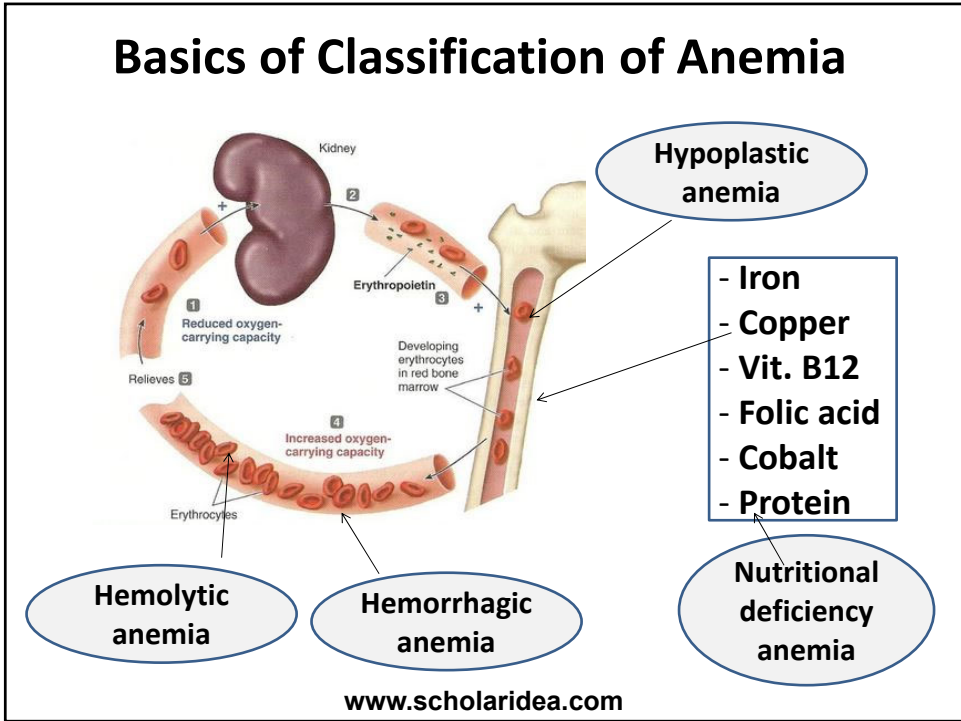
3

Diagnosis of anemia

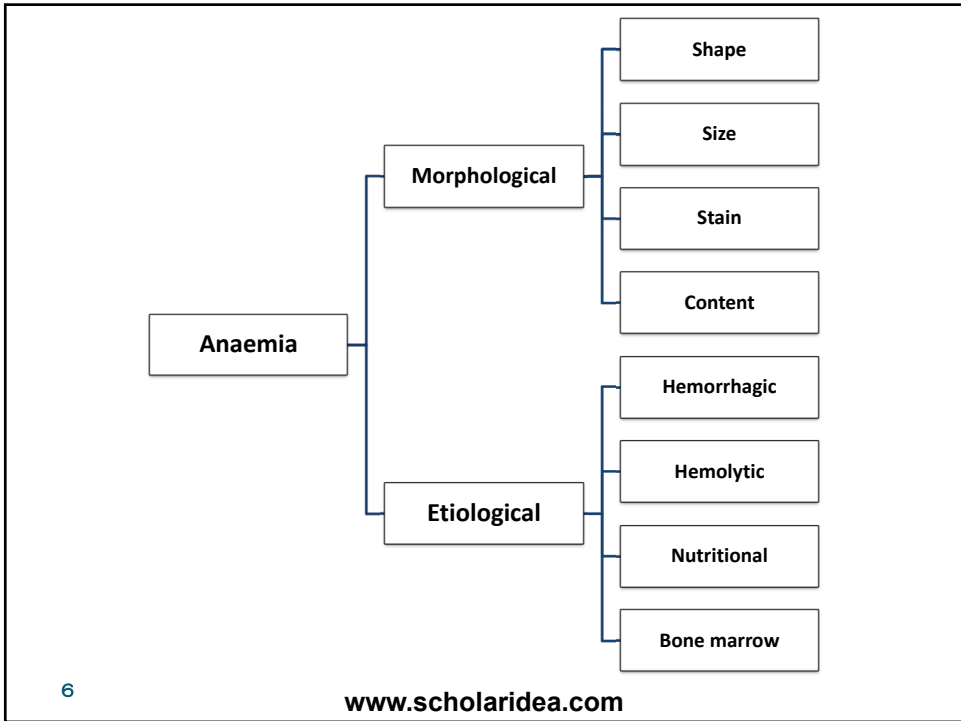
- Red blood cells count.
- Hemoglobin concentration.
- Packed cell volume.
- Mean corpuscular values.
- Stained blood smear.

www.scholaridea.com

4



5



6

Morphological classification of anemia

Abnormalities in shape

Abnormalities in size

Abnormalities in stain

Inclusion bodies of erythrocytes

7

www.scholaridea.com

7

Abnormalities in shape of the erythrocytes (Poikilocytosis)

1. Elliptocytes

2. Spherocytes

3. Ovalocytes

4. Target cell

5. Nucleated

6. Tear Drop cell

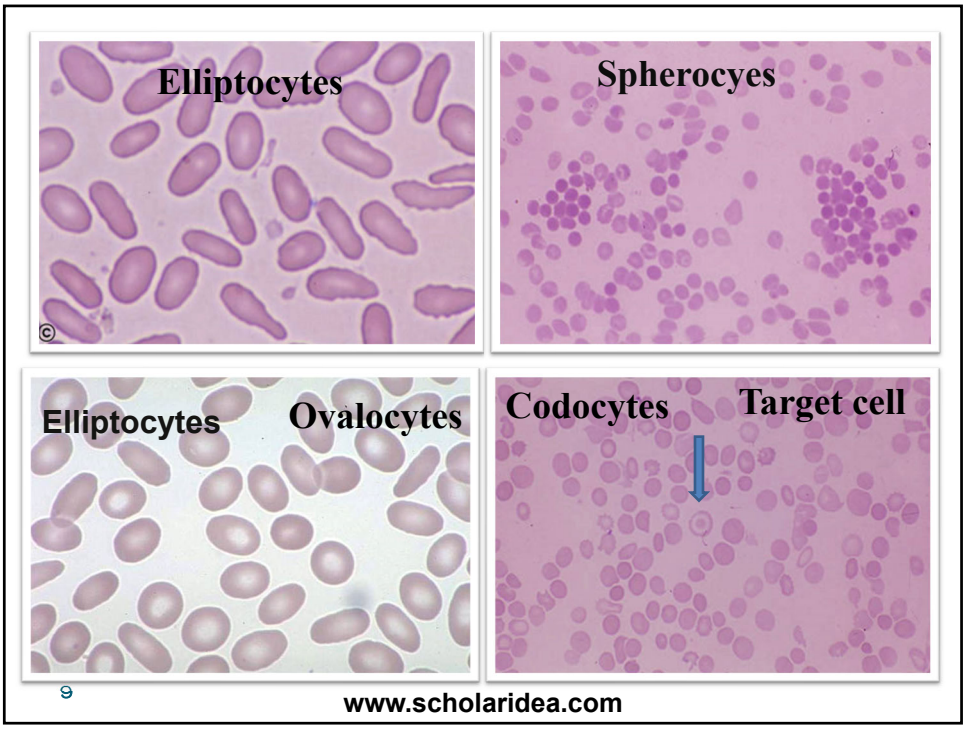
7. Crenation

8. Eccentrocytes

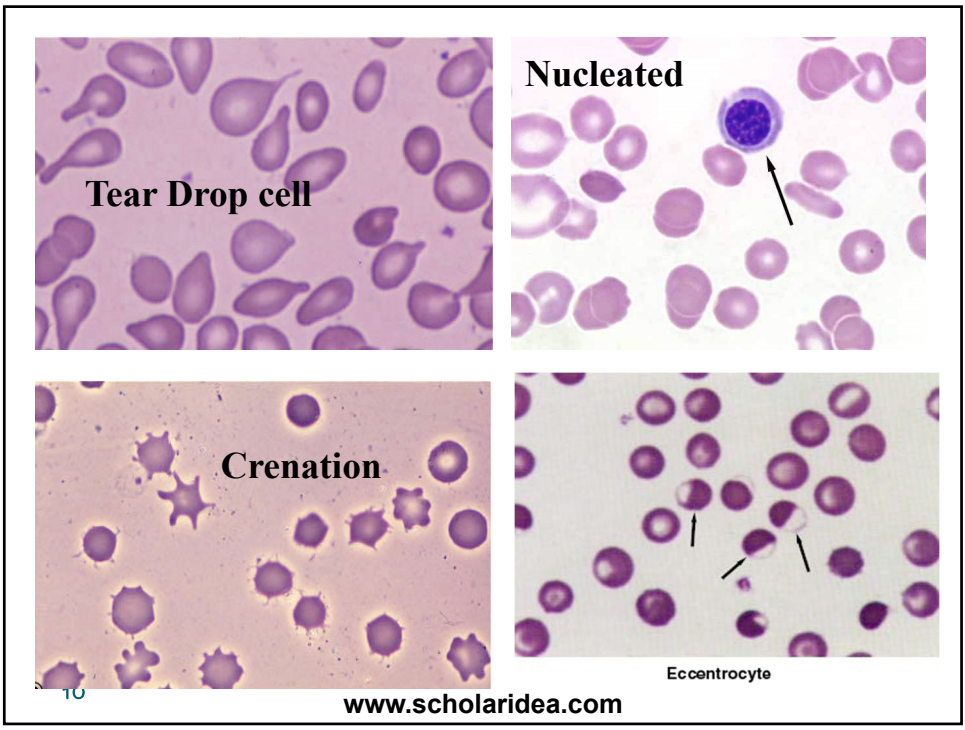
8

www.scholaridea.com

8

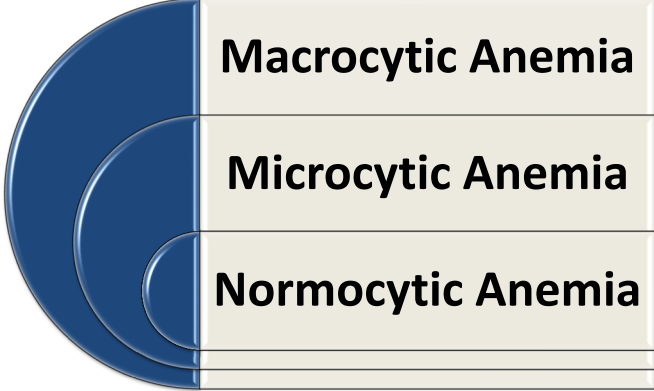


9



10

Abnormalities in size and stain
Abnormalities in size (anisocytosis)
Mean Corpuscular Volume (MCV)

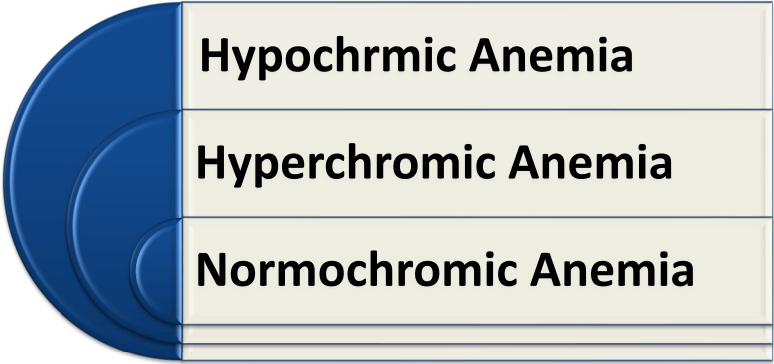


Macrocytic Anemia
Microcytic Anemia
Normocytic Anemia

11 www.scholaridea.com

11

Abnormalities in stain
Mean Corpuscular Hemoglobin (MCH)
Mean Corpuscular Hemoglobin concentration (MCHC)



Hypochromic Anemia
Hyperchromic Anemia
Normochromic Anemia

12 www.scholaridea.com

12

Microcytic Hypochromic anemia

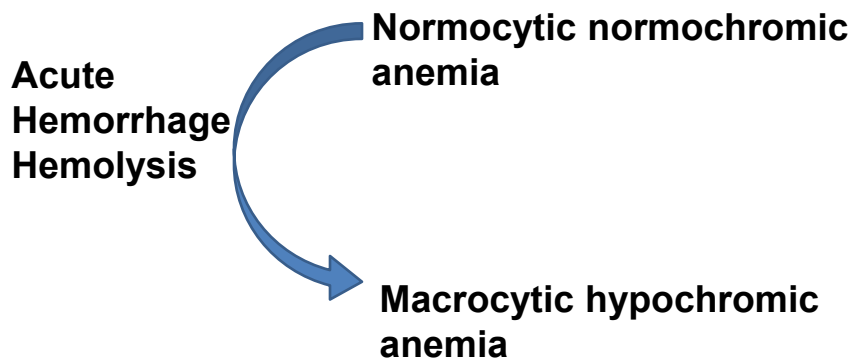
- **Deficiency of Iron.**
- **Deficiency of Copper.**
- **Molybdenum Poisoning.**
- **Chronic Blood Loss.**

13

www.scholaridea.com

13

Macrocytic Hypochromic anemia



14

www.scholaridea.com

14

Macrocytic normochromic anemia

Pernicious Anemia

Deficiency of Cobalt

15

www.scholaridea.com

15

Abnormalities in content of the red blood cell

Inclusion bodies of erythrocytes:

1. Reticulocytes.
2. Basophilic stippling.
3. Howell Jolly body.
4. Heinz bodies.
5. Distemper inclusion bodies.
6. Protozoal parasites.

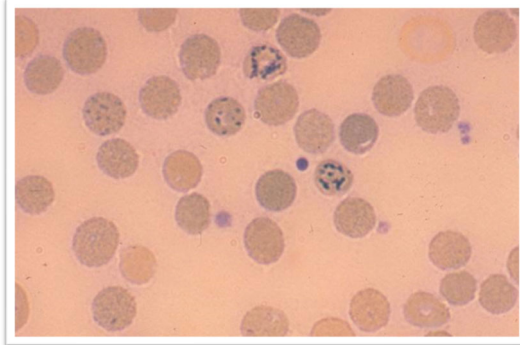
16

www.scholaridea.com

16

1. Reticulocytes

Reticulocyte is a non-nucleated cell of the erythrocytic series, which when stained with brilliant cresyl blue, present one or more granules or diffuse network of fibrils.



17

www.scholaridea.com

17

The reticulocytes differ from erythrocytes in:

- A. Larger in size
- B. More resistant to crenation.
- C. Has a lower specific gravity.
- D. More resistant to hypotonic saline solution.
- E. Reticulocytes don't participate in Rouleux formation.

Reticulocytosis: Occur in cases of acute hemorrhage or hemolytic anaemia.

18

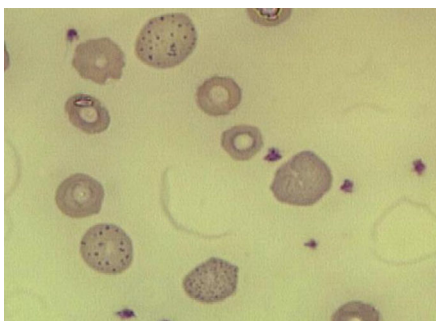
www.scholaridea.com

18

2. Basophilic stippling

A condition of the erythrocyte in which blue staining basophilic granules are scattered over the cell.

- Punctuate basophilic granules.
- Diffuse basophilic granules



19

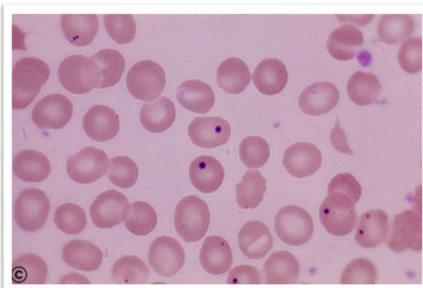
www.scholaridea.com

19

3. Howell Jolly body

This is a nuclear remnant of 1–2 microns in diameter.

In Giemsa stained smear, Howell jolly bodies appear as single and at times double spherical bluish bodies within red blood cells.



20

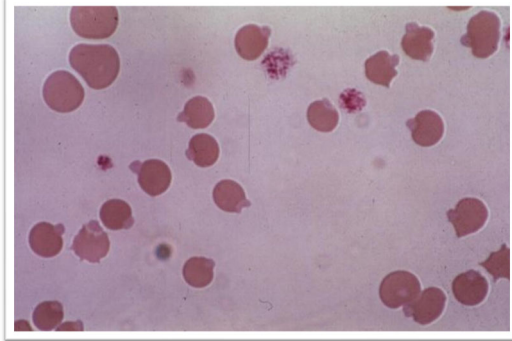
www.scholaridea.com

20

4. Heinz bodies

Heinz bodies are small, round to irregularly shaped inclusion bodies.

They formed within the RBCs of man and animals exposed to toxic drugs and chemicals and often resulting in hemolytic anaemia.



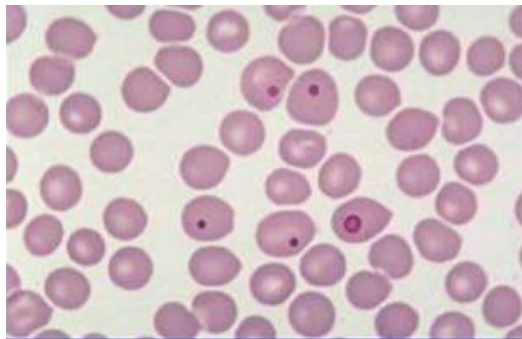
21

www.scholaridea.com

21

5. Distemper inclusion bodies

❖ In Giemsa or Leishman stained blood film, the inclusion bodies take a pale blue stain, and it is larger than Howell jolly bodies.



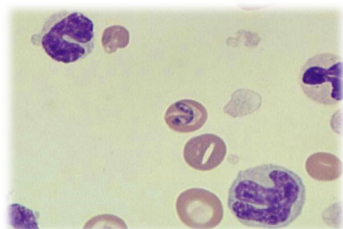
22

www.scholaridea.com

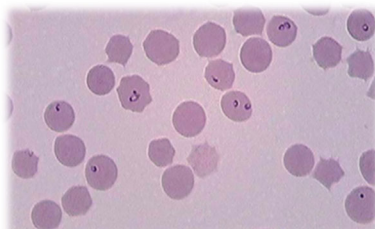
22

6. Protozoal parasites

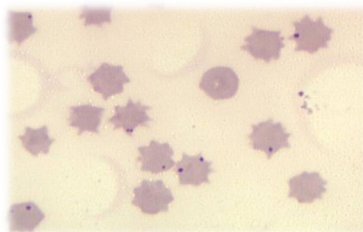
Babesia Sp.



Theileria Sp.



Anaplasma Sp.



23

www.scholaridea.com

23

Etiological Classification of Anemia

Hemorrhagic anemia

Hemolytic anemia

Nutritional Deficiency anemia

Pathological anemia

24

www.scholaridea.com

24

1. Hemorrhagic anemia

a) Acute hemorrhagic anaemia

b) Chronic hemorrhagic anemia

Acute hemorrhagic anaemia

The anaemia of acute blood loss occurs when large proportion generally 25 % of the circulating blood volume is lost in a period of several minutes to several hours.

25

www.scholaridea.com

25

Causes of acute hemorrhagic anaemia

- ❖ Trauma, cutting of major blood vessel or surgery.
- ❖ Hemorrhage from highly vascular malignant neoplasm especially hemangio-endotheliomas.
- ❖ Defect of coagulation mechanisms such that occur with:
 - ❖ Sweet clover poisoning.
 - ❖ Warfarin poisoning.
 - ❖ Bracken fern poisoning.

26

www.scholaridea.com

26

Laboratory findings of acute hemorrhagic anaemia:

- ❖ Signs of regeneration
- ❖ Reticulocytosis.
- ❖ Anisocytosis.
- ❖ Increase MCV.
- ❖ Decrease MCH.

27

www.scholaridea.com

27

b. Chronic hemorrhagic anaemia

Causes

1. Internal parasites such as stomach worm, hook worms, coccidia, and liver flukes, which produce anaemia by combination of blood loss and poor nutrition.
2. External parasites such as ticks, blood sucking lice and certain types of flea.

28

www.scholaridea.com

28

3. Hemorrhagic gastritis and enteritis.
4. Gastric ulcer.
5. Chronic hemorrhage in the genitourinary tract.
6. Hemorrhage into body cavities from neoplasm.

29

29

2- Haemolytic anaemia

This type of anaemia is associated with excessive destruction of erythrocytes.

- Causes**
1. Blood parasites.
 2. Bacterial infection.
 3. Viral infection.
 4. Chemical agents
 5. Some metabolic diseases
 6. Poisonous plants.
 7. Immune mediated diseases.

30

www.scholaridea.com

30

1. Blood parasites

- **Babesia Sp.**

2. Bacterial infection

- There are two common bacterial infection in which anaemia occurs which are *leptospirosis* and *Clostridium haemolyticum* infection.

31

www.scholaridea.com

31

3. Viral infection

- Equine infectious anaemia characterized by chronic illness, animal infected with the virus become carrier.
- Clinically the disease is characterized by an intermittent fever, jaundice, oedema and petichial haemorrhages in the mucosa.

4. Chemical agents

Copper Toxicity

Phenothiazine

32

www.scholaridea.com

32

5. Some metabolic diseases

- **Post-parturient haemoglobinuria**
- **Cold haemoglobinuria**

6. Poisonous plants

Caster bean

33

www.scholaridea.com

33

7. Immune mediated diseases

A. Autoimmune haemolytic anaemia:

Where the body forms antibodies against its own RBCs.

B. Isoimmunne haemolytic anaemia:

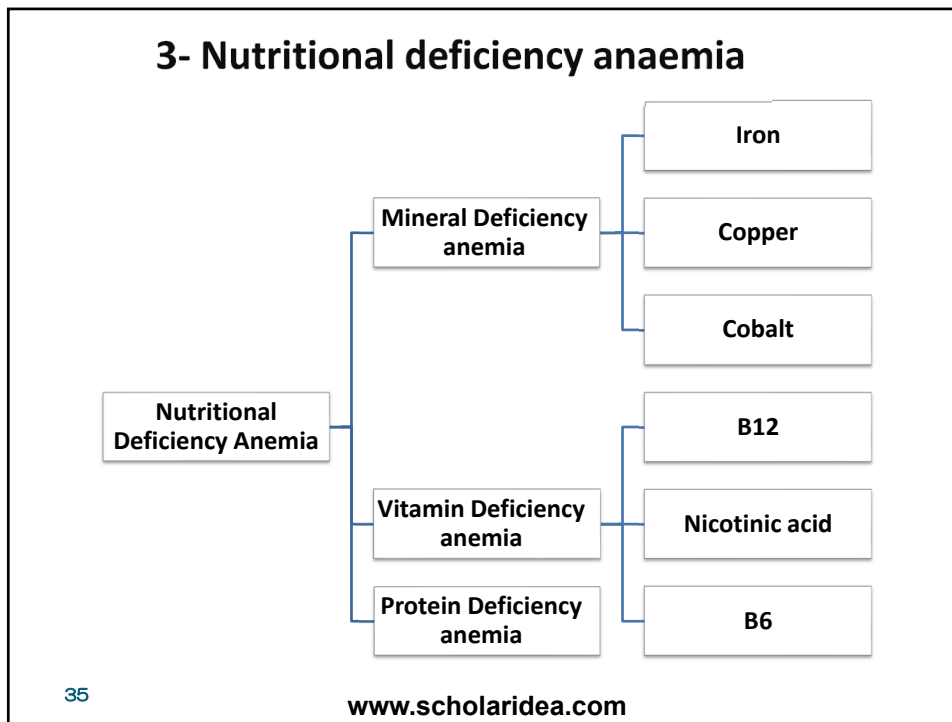
The antibodies against RBCs come from another individual which either:

- **Incompatible blood transfusion**
- **Neonatal isoerythrolysis.**

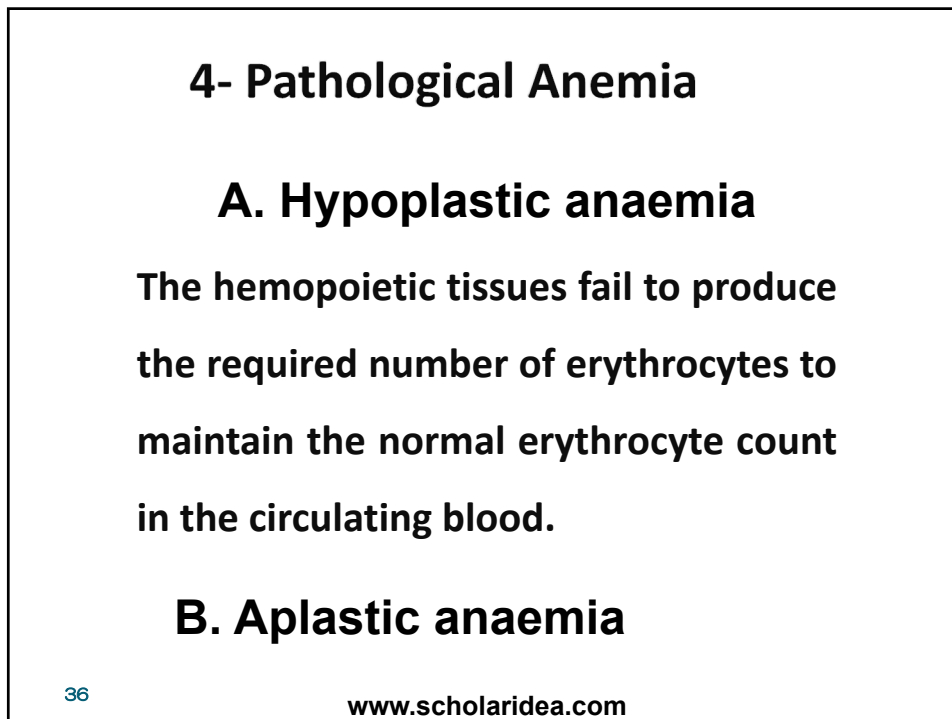
34

www.scholaridea.com

34



35



36

b. Aplastic anaemia

Failure of the bone marrow to produce erythrocytes.

Causes

- 1. Radiation (X ray).**
- 2. Certain chemicals as sulphonamides, chloramphenicol, lead, copper, arsenic and mercury.**
- 3. Exhaustion of the bone marrow may follow chronic blood loss.**

37

www.scholaridea.com

37

Regenerative and none Regenerative anemia

Regenerative anemia is characterized by the presence of immature RBCs (reticulocytes) in the peripheral blood. Regenerative anemia is usually associate hemorrhagic (Blood loss) and hemolytic anemia.

38

www.scholaridea.com

38

Non-regenerative anemia is characterized by absence of immature RBCs from the peripheral blood.

- **Conditions characterized by non-regenerative anemia include:**

- Anemia of inflammation, which is mild to moderate anemia.
- Renal disease, due to the lack of erythropoietin and consequently decrease erythrocyte synthesis by the bone marrow.
- Iron deficiency anemia, which characterized by microcytic hypochromic anemia.

39

www.scholaridea.com

39

Infectious and inflammatory diseases:

- As part of the immune response that occurs with infection and noninfectious inflammatory diseases, cells of the immune system release proteins called cytokines. These proteins help heal and defend the body against infection. But they can also affect normal body functions. Cytokines interfere with the body's ability to absorb and use iron. Cytokines may also interfere with the production and normal activity of erythropoietin (EPO), a hormone made by the kidneys that stimulates bone marrow to produce RBCs.

40

www.scholaridea.com

40

Myelophthisic anemia

Myelophthisic anemia is due to the infiltration of abnormal cells into the bone marrow and subsequent destruction and replacement of normal hematopoietic cells

With disruption of normal bone marrow architecture by the infiltrating cells, the marrow releases immature hematopoietic cells. Furthermore, because of the unfavorable bone marrow environment, stem and progenitor cells migrate to the spleen and liver and establish extramedullary hematopoietic sites.

41

41

Handouts of the Lecture is



The Video of the Lecture is Available on



42